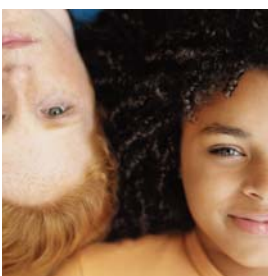
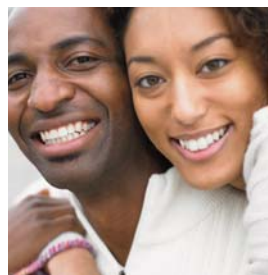


# Mississippi Profile

SPRING 2011

Information Publication from the Mississippi Department of Mental Health

## DMH Hosts IDD Day at the Capitol



*Supporting a Better Tomorrow... Today*

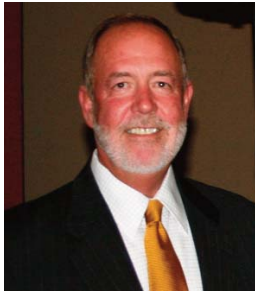


The Mississippi Department of Mental Health (DMH) celebrated March as Intellectual and Developmental Disabilities (IDD) Awareness Month during the annual IDD “Day at the Capitol” on March 22. The goal of the event was to increase the public’s knowledge and awareness of individuals with IDD and how they participate in their communities.

“Day at the Capitol provides us with an opportunity to educate the public and our legislature about intellectual and developmental disabilities,” said Ed LeGrand, DMH Executive Director. “With the support of our partners, such as families, self-advocates and service providers, we look forward to a better tomorrow for individuals with intellectual and developmental disabilities.”

Pictured are (left to right, front row) Blake Roberts; Sheila Dickard, Life Help; Shirley Miller, Director of Mississippi Adolescent Center; Jennifer Boswell, Ellisville State School; and Danny Cowart, Brandi’s Hope; (left to right, second row) Linda Morrow, Oxford Healthcare; Kathy Pittman, Boswell Regional Center; Jill Smith, South MS Regional Center; BJ Davis, North MS Regional Center; and Faye Jordan, Hudspeth Regional Center; (third row) Kris Jones, DMH Director of the Bureau of IDD; Bel Ferguson, Hudspeth Regional Center; Gloria Johnson, Assistant Director of Boswell Regional Center; Dan McGaughy, Mississippi Council on Developmental Disabilities; Cossandra Holly-Glausier, Association for Persons in Supported Employment (APSE) and Josh Friedel, LIFE.

# Executive Director's Message



It's been a very exciting Spring with the end of the 2011 Legislative Session and the beginning of new opportunities.

I want to thank everyone for their support during the Legislative Session. It is because of your dedication to the citizens of Mississippi that we will be able to keep all existing services. This edition of *Mississippi Profile* spotlights a rally held at the State Capitol in support of mental health services. The more than 500 attendees is proof that Mississippians care about their public mental health system and the people we serve.

We are pleased the Legislature minimally funded the public mental health system in FY12 by providing \$249.3 million. While this appears to be an increase in funds, due to the loss of the enhanced federal share of Medicaid, we will actually have to reduce the cost of our existing operations by \$7.7 million. However, it is our intention to take this cut out of DMH operated facilities and services. Our capacity for community-based programs will remain the same.

The Mississippi Legislature clearly indicated no facility closures in FY12. We will be able to keep all existing services. The funding also includes \$17.2 million to pay the state's share of Medicaid match for Community Mental Health Centers (CMHCs) and we will redirect \$2.8 million from other programs to make a total of \$20 million, the amount needed. More than 100,000 individuals are served by the CMHCs each year. Minimum funding for CMHCs is extremely important because the Centers help prevent individuals from needing lengthy inpatient care and serve patients who are discharged from private and public hospitals to ensure they do not need to return to a hospital for additional lengthy inpatient care.

I hope you enjoy this edition of *Mississippi Profile* and the highlights from activities across the state. Again, thank you for your continued support.

Sincerely yours,

Edwin C. LeGrand III  
Executive Director

# Mississippi Profile



---

Spring 2011

Mississippi Department of Mental Health  
Board Members  
J. Richard Barry, Chairperson  
Robert Landrum, Vice Chairperson  
Margaret Ogden Cassada, M.D.  
George Harrison  
Jim Herzog, Ph.D.  
John Perkins  
Rose Roberts, LCSW  
Sampat Shivangi, M.D.  
Manda Griffin

---

Edwin C. LeGrand III  
Executive Director

---

Wendy D. Bailey, Editor

---

The Mississippi Profile is devoted to providing the public with information about services provided or administered by the Mississippi Department of Mental Health. It also strives to increase public awareness and knowledge about mental illness, mental retardation/developmental disabilities, substance abuse, and Alzheimer's disease and other dementia to improve health and quality of life.

---

This publication is free of charge to persons interested in mental health, mental retardation/developmental disabilities, substance abuse, Alzheimer's disease and other dementia, the Mississippi Department of Mental Health, or the individuals it serves. It is the policy of the Mississippi Department of Mental Health to comply with federal and state laws assuring equal opportunities of employment and services.

---

The editor reserves the right to edit all materials printed in this publication. Send requests for items to be included in the newsletter and other inquiries to:

Division of Public Information  
ATTN: Wendy Bailey  
MS Department of Mental Health  
1101 Robert E. Lee Building  
239 North Lamar Street  
Jackson, MS 39201  
Phone: (601) 359-1288  
TDD: (601) 359-6230  
FAX: (601) 359-6295  
wendy.bailey@dmh.state.ms.us

# Mental Health Rally at the Capitol

Mental health and public education supporters from across the state gathered at the State Capitol on March 29 for a joint rally. More than 500 people attended the event to support minimum funding for education and mental health as proposed by the House of Representatives. The purpose of the rally was to support the public mental health system and minimum funding at the level recommended by the Legislative Budget Committee plus Medicaid match for Community Mental Health Centers (CMHCs).

Within days following the rally, the Legislature passed a budget for mental health totaling \$249.3 million. With this amount, DMH will be able to keep existing services open including the seven Crisis Stabilization Units (CSUs) across the state. CSUs allow individuals with serious mental illnesses to access the psychiatric



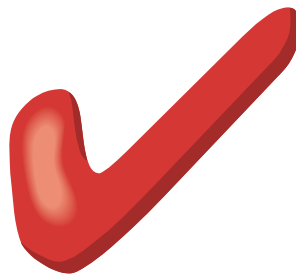
services they need on a voluntary basis before they decompensate to the point of meeting involuntary commitment criteria.



“We will have to reduce the cost of our existing operations by \$7.7 million,” said Ed LeGrand, DMH Executive Director. “However, it is our intention to take this cut out of DMH operated facilities and services. Our capacity for community-based programs will remain the same.”

The funding includes \$17.2 million to pay the state’s share of Medicaid match for CMHCs and DMH will redirect \$2.8 million from other programs to make a total of \$20 million, the amount needed. More than 100,000 individuals are served by the CMHCs each year.

*For information and upcoming events...*



*Check out our Web site at [www.dmh.ms.gov](http://www.dmh.ms.gov)*

# DMH Board Members Reappointed

The Board of Mental Health Senate Confirmation Hearing for Ms. Manda Griffin of Houlka, Dr. Kea Cassada of Leland, and Mr. George Harrison of Coffeerville was held at the State Capitol on March 29.

“We are very excited to have the opportunity to work with Ms. Griffin, Dr. Cassada and Mr. Harrison again,” said Ed LeGrand, Mississippi Department of Mental Health Executive Director. “We appreciate the Governor appointing such talented and upstanding individuals to the Board. Each of these talented individuals brings their unique experiences and vast knowledge to the Board.”

Ms. Griffin is a registered respiratory therapist, a licensed social worker, registered nurse, and a board certified family nurse practitioner. She received her bachelor’s degree from Mississippi University for Women and her master’s degree from Alcorn State University. Ms. Griffin was appointed to serve as a lay representative for the Second Congressional District.

Dr. Cassada is a member of the Mississippi Psychiatric Association and the Southern Psychiatric Association. She is a fellow of the American Psychiatric Association. Dr. Cassada is the medical director and psychiatric consultant for several facilities in the Delta and is Board certified.

Mr. Harrison attended Northwest Community College and served as a Production Manager for 41 years at Lennox International in Grenada. He previously served on the Governor’s Council for Developmental Disabilities and the BMR Advisory Council. Mr. Harrison was appointed to represent the First Congressional District.



*Pictured (l to r) are Ed LeGrand, DMH Executive Director; Manda Griffin; George Harrison; and Dr. Kea Cassada.*

## **DMH MISSION**

*Supporting a better tomorrow by making a difference in the lives of Mississippians with mental illness, substance abuse problems and intellectual or developmental disabilities one person at a time.*

## Dr. Sandy Rogers Retires from NMRC



Dr. Sandy Rogers, Director of North Mississippi Regional Center (NMRC) in Oxford, has announced her retirement effective May 31, 2011.

Dr. Rogers began her career with DMH in 1985 at South Mississippi Regional Center in Long Beach. She transferred to the North Mississippi Regional Center in 1988 as a Staff Development Instructor and later served as an Academic Teacher before being named Director of the Center's Briar Ridge ICF/MR Community Homes in Tupelo in 1992. In 1994, she returned to the Oxford campus and served leadership roles in Education, Staff Development, and Community Services.

In April 2000, Dr. Rogers was named Assistant Director of North Mississippi State Hospital in Tupelo. She returned to NMRC in 2001 as Assistant Director of Programmatic Services. In 2005, she was named Director of the Department of Mental Health's Specialized Treatment Facility in Gulfport,

and served in that capacity until her appointment as Director of the North Mississippi Regional Center in 2007.

"Dr. Rogers has dedicated her life to serving individuals with mental health needs," said Ed LeGrand, DMH Executive Director. "Dr. Rogers has touched thousands of lives during her years of service to the agency. Her knowledge and skills are immense and will be greatly missed."

She holds AA and AAAA Educators Licenses, is licensed as a Nursing Home Administrator, and is a Licensed Intellectual and Developmental Disabilities Therapist. She holds membership in the American Association on Intellectual and Developmental Disabilities, the Mississippi Society of Certified Public Managers, the Mississippi Association of Behavioral Healthcare Management, and is a graduate of the State Executive Management Institute.

Dr. Rogers earned graduate and doctoral degrees at the University of Mississippi. She is married and has two children and one grandchild.

---

## More than 300 Attend MS School for Addiction

In an effort to help educate Mississippians about alcohol and drug abuse and prevention, the 4th Annual Mississippi School for Addiction Professionals, hosted by the Mississippi Department of Mental Health (DMH) Bureau of Alcohol and Drug Abuse, was held April 5 – 8 at the Hattiesburg Convention Center. More than 300 people attended the conference.

The MS School for Addiction Professionals offered exciting plenary sessions, special events and a variety of courses in prevention, intervention and treatment, all of which are designed to enhance the skills and knowledge of each participant. The MS School offered many courses that address contemporary topics to help professionals remain abreast as to the latest trends in their areas.



# Partnership Blossoms Into New Opportunities

For Mandy Shumaker's family-owned business Lakeside Moulding, what started out as a Clarion-Ledger article 16 years ago has turned into another addition to her family and a cornerstone of her business.

Lakeside Moulding is celebrating its 25th anniversary this year, a milestone for the local, family-owned company. But the real milestone they're talking about is the fact that it's been 16 years since Dennis Prestel came to work for them through Hudspeth Regional Center's Supported Employment Program.

"We were still pretty young then, and searching for ways to find the right employees to fit the right job," owner Mandy Shumaker said. "We didn't have a lot of money, but we needed some extra help, and having somebody part time seemed like a good idea. I called Hudspeth after I read the newspaper article, Dennis came to work here, and that was 16 years ago."

"I don't think there's anybody over the years who's worked here who has not had a great relationship with Dennis," Shumaker said. "They've all felt close to him. He's been a real blessing to all of us."

But to ask Dennis, he says they've been the blessing to him.

"This job has given me a lot of independence, and some extra spending money," he said. "It's helped me to grow, and I've made a lot of friends. It's just been a great experience. God has really blessed me with this job and these people here. It's a great environment to work in."

The article Shumaker read was about Hudspeth's Supported Employment Program. It's designed to place people in competitive jobs in the community to enable them to be as productive and independent as possible.

Dennis came and interviewed for his job just like other employees do, and throughout his 16 years there, he hasn't missed a whole lot of that job. Shumaker said he never even took a sick day until just a couple of years ago.

"If we were a bigger company with rewards programs, Dennis would get the perfect attendance awards. He is always here, unless he's scheduled to be off," she said. "He really cares about his job. He's conscientious, and he tries really hard to please everybody."

Shumaker said her years with Presetel have taught her, and everyone else who comes through Lakeside Moulding, an important lesson.



***Pictured above are (l to r) Mandy Shumaker, Dennis Prestel, and Debra Davis, who works with Dennis on the housekeeping staff, at Lakeside Moulding's showroom.***

"Most people who have never been around someone with a mild handicap may think they don't have a lot to offer," Shumaker said. "But Dennis has a lot to offer, as a person, as an employee, in any kind of conversation."

She's noted the changes they've seen in him throughout the years. The shy man in his 30s who once kind of peeked around the door as he was coming to work is now a friendly, outgoing person who is open with everyone and loves to meet new people.

"He really cares about everyone who has a place in his life," Shumaker said. "If employees leave here and go somewhere else, he always wants to know how they're doing. He takes an interest. People are not just passing by in his life. He really thinks about them and cares about them. He's just a really good person."

Besides his work ethic, Shumaker and Brunson both said one of the things they like about him the most is his laughter. It starts slowly, but it builds as he tends to look down as his shoulders start to shake, slowly at first and then much more rapidly as the humor really grips him.

They got to see a lot of that laughter with his recent birthday. For his 50th birthday party in December, Brunson organized a bowling party, since Dennis is a fan of the sport. Employees, family and friends alike all came.

"And he was better than most," Brunson said.

The reason for that is simple, Dennis said.

"Like with anything, it takes practice and dedication and commitment," he said. "That's what I've done with this job. It's given me dedication and commitment and focus, and that's helped me a lot."

# Social Host Law Passes Legislature

## News & Updates

- DMH was presented with three awards at the Public Relations Association of Mississippi annual conference in March. The agency received a Prism for a budget impact editorial, a Prism for the Operation Resiliency poster, and a Certificate of Achievement for the None for Nine brochure. South Mississippi State Hospital also received a Certificate of Achievement for their 10th anniversary celebration.
- The FY11 Third Quarter Progress Report for the DMH Strategic Plan was presented to the Board of Mental Health in April. Visit DMH's Web site at [www.dmh.ms.gov](http://www.dmh.ms.gov) to view the report. Go to Public Information - Online Documents.
- C. Kenneth Lippincott, M.D., Clinical Director at North Mississippi State Hospital in Tupelo has been elected to the status of Distinguished Fellow of the American Psychiatric Association (APA). Distinguished Fellow is the highest honor the APA bestows upon members.

The Mississippi Legislature passed a Social Host Law during the 2011 Legislative Session. Here is some more information about the new law.

### WHAT IS THE SOCIAL HOST LAW?

- It holds adults liable for knowingly permitting underage drinking parties on their property. The penalty is a misdemeanor with a maximum fine of \$1,000 and/or jail time.

### WHY DID WE NEED THIS LAW?

- In 2007, \$552 million was spent on underage drinking in Mississippi alone. This includes costs related to violence, traffic crashes, crime, injuries, and treatment.
- In 2009, 24% of Mississippi students reported drinking in the past 30 days, compared to those who report smoking tobacco (13%) or using marijuana (9%).
- In 2007, an estimated 41 traffic fatalities and 500 nonfatal traffic injuries involved underage drinking.



### WHAT ARE THE BENEFITS OF A SOCIAL HOST LAW?

- Decreases underage drinking-related consequences such as car accidents and fatalities, violence, sexual assaults, and risky behaviors.
- Increases revenues locally and statewide when fines are collected.
- Reduces underage drinking cost-effectively.
- Reduces the long term impact of underage drinking (95% of adult alcoholics began drinking before age 21).

*Information provided by Mississippians Advocating Against Underage Drinking (MAAUD).*

## Dr. John Lipscomb Retires from HRC

After 39 years with the Mississippi Department of Mental Health (DMH), Dr. John Lipscomb will retire on June 30, 2011.

Dr. Lipscomb began his career with DMH in 1972 when he became Director of the Jaycee Evaluation Center at Ellisville State School (ESS). From 1981 to 1986 he served as Director of Community Services at the school. He expanded his professional experience in 1987 with a clinical internship at the University of Utah, where he provided diagnostic services and psychotherapy to children. In 1990, Dr. Lipscomb was appointed Director of Psychology at ESS.

Hudspeth Regional Center (HRC) entered the picture in 1991, when he was appointed Assistant Director of the facility. Located in Whitfield, HRC serves individuals with intellectual and developmental disabilities. Three years later, Dr. Lipscomb was named Director of HRC, where he was responsible for directing the operation of an on-campus setting for 365 individuals and another 1,000 individuals living in the community.

“Dr. Lipscomb has always treated his staff and the individuals served at HRC with dignity and respect,” said Ed LeGrand, DMH Executive Director. “For many years he has constantly tried to make their lives better, without regard for any recognition. He will be greatly missed.”



A licensed psychologist, Dr. Lipscomb earned multiple degrees at the University of Southern Mississippi, including a Ph.D. in special education and a Ph.D. in psychology. He is a member of the Mississippi Society of Certified Public Managers.

After retiring, Dr. Lipscomb, an avid fisherman, will serve as CEO of “Captain John’s Chat & Charter,” a therapeutic charter service for neurotic fishermen who have a history of unresolved guilt after letting the big ones get away. If you spot him after June 30, it most likely will be on navigable waters.

---

## Agencies Honored with House Resolution

DMH was one of several agencies honored for its hard work after the BP Deep Horizon Oil Spill with House Resolution 145. The Resolution commends the commitment, dedication, personal sacrifice and labor of love of each state agency employee who responded to, and continues to respond to, the impacts of the oil spill.

The April 20, 2010 oil spill killed 11 men and set off a summer of unprecedented response to containment, cleanup and recovery of oil spillage into the Gulf of Mexico. DMH responded to this disaster by applying for and receiving \$12 million from BP to support efforts to help Mississippi residents in the coastal communities access appropriate behavioral health services. DMH awarded 14 grants to provide behavioral health services to individuals impacted by the oil spill.



*Pictured above are (l to r) Representative Billy Broomfield; Mardi Allen, DMH Clinical Liaison; Scott Sumrall, Director of DMH Disaster Preparedness and Response; Representative John Mayo; Ed LeGrand, DMH Executive Director; and Representative Frances Fredericks.*