



Certified Community Behavioral Health Centers (CCBHC) Planning Grant CCBHC Learning Collaborative August 9 at 10 a.m.



**MENTAL
HEALTH**



**INTELLECTUAL AND DEVELOPMENTAL
DISABILITY SERVICES**



**ALCOHOL AND DRUG
ADDICTION SERVICES**



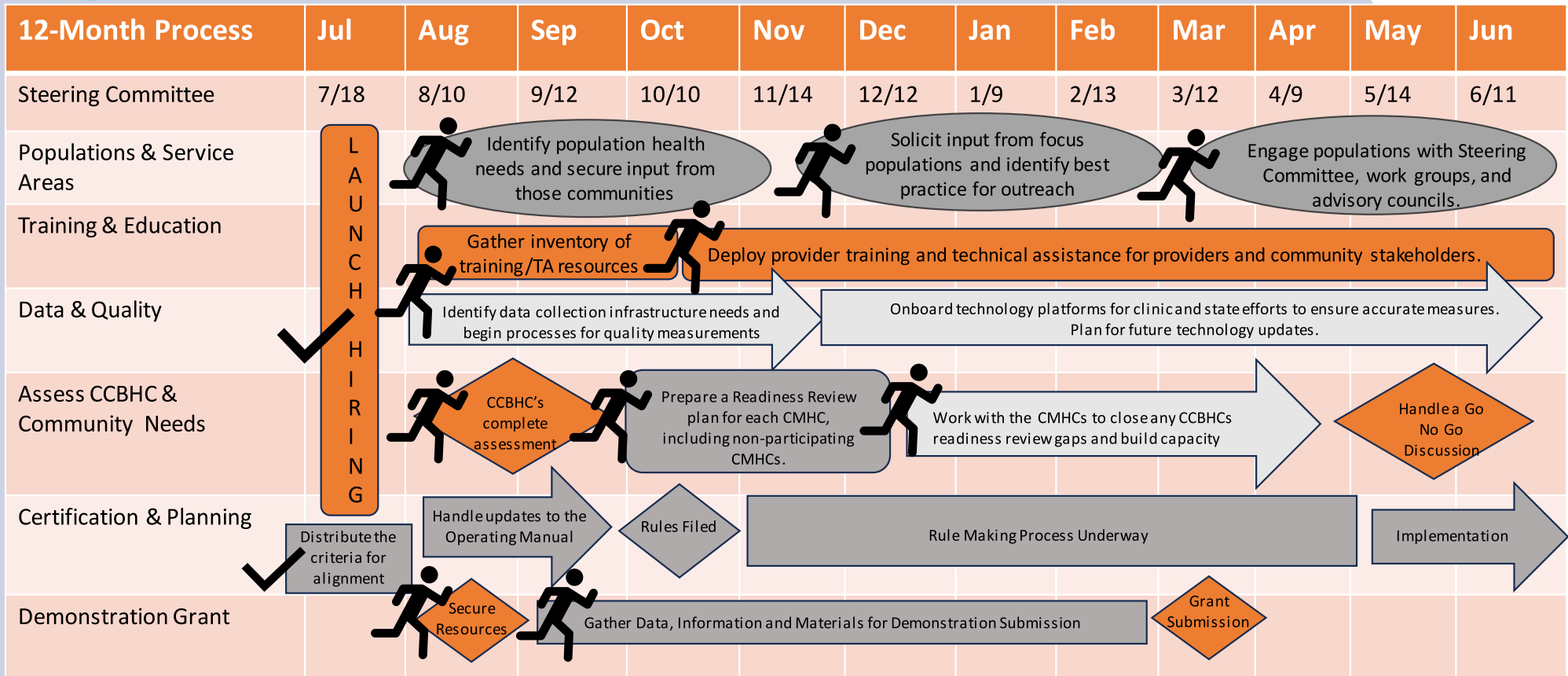
CCBHC Learning Collaborative

Agenda

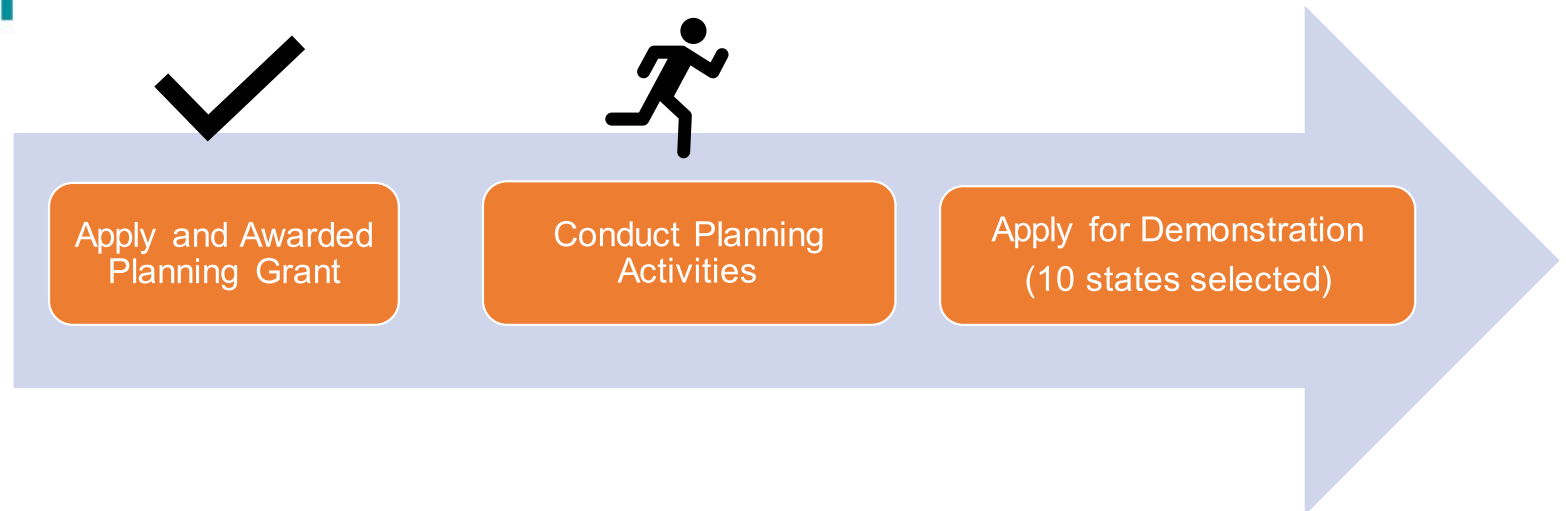
- Get an update on MS's CCBHC State Planning Grant Activities
- Review DMH and CMHC Roles and Responsibilities
- Hold an Open Discussion: What topics do you want to learn more about?
- Questions and Feedback



Mississippi Planning Grant Activities and Timeline

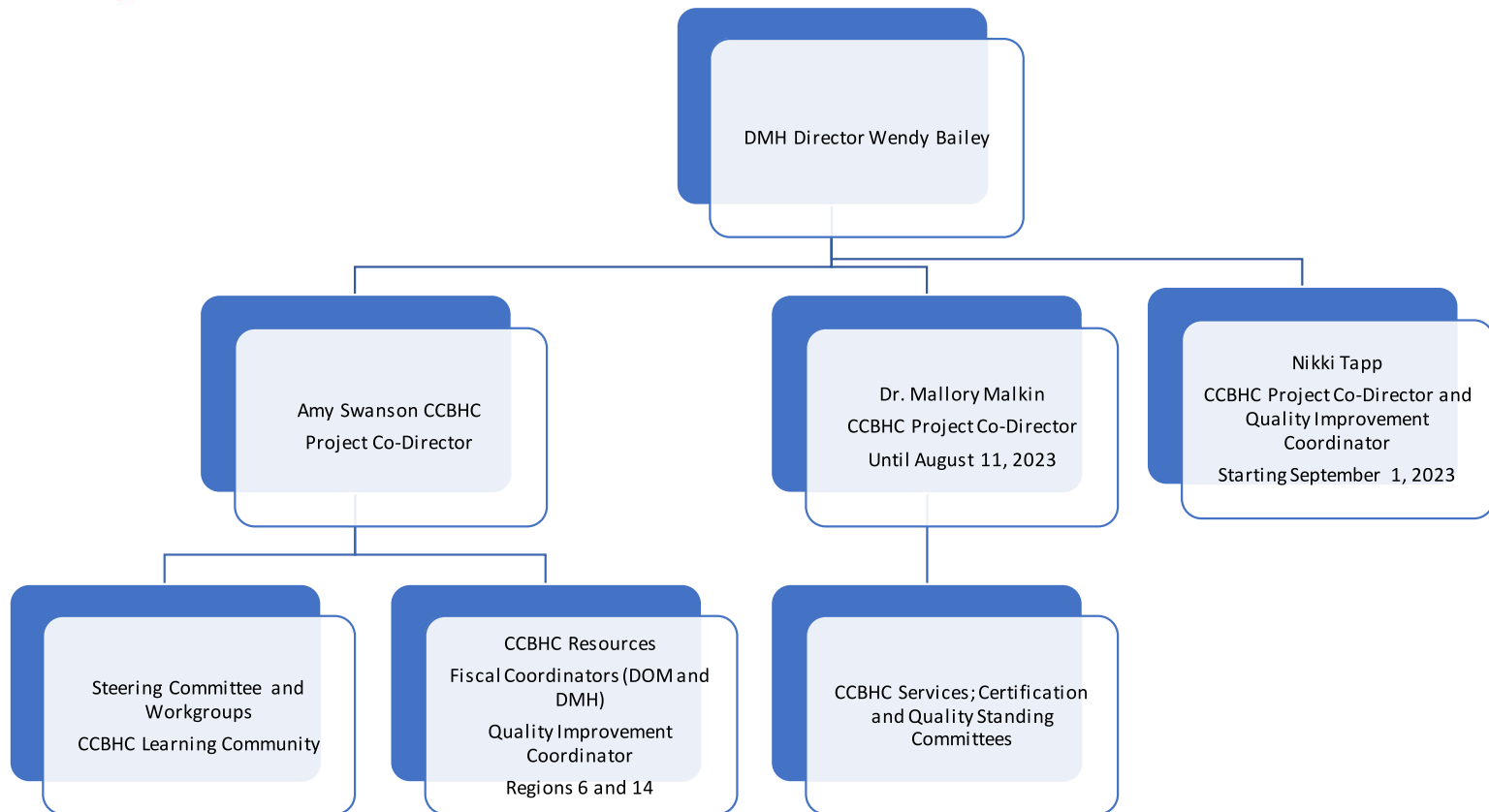


CCBHC Demonstration Participation



- **Eligibility to Apply for the Demonstration**
 - If a state has received a planning grant in 2016 or 2023, they can apply to join the demonstration on 3/20/24. 25 States eligible to apply for 10 awards.

MS CCBHC Planning Grant Oversight





MS CCBHC Steering Committee

CCBHC Steering Committee Meetings: 2nd Tuesday, Monthly at 2:30 p.m. CST



Executive Committee

Governance: Meeting every Tuesday from 8-8:45 a.m.

Finance: Meeting every Wednesday from 9:00-9:45 a.m.

Infrastructure

Staffing and Workforce Development; Training; Family & Client Engagement; Care Coordination; and Culture Competency.

CCBHC Certification

DMH Operational Standards Committee Schedule

Quality

Data and Reporting; Evaluation; and Quality Assurance Plan

Services and Supports

IDD; SUD; Children and Youth

CCBHC Learning Collaborative: *We will have an agenda item during the Mississippi CMHC Association meeting on the 2nd Wednesday, monthly from 10-Noon CST.*

Stakeholder Engagement, Outreach and Communications



DMH Responsibilities

- Lead and oversee all CCBHC State Planning Grant Activities, including completing the MS Community Needs Assessment.
- Supply non-CCBHC and CCBHC participating CMHCs with a CCBHC activities plan. **See attached CCBHC Planning Grant Required Activities in Phases Updated 8.2.23.docx*
- Work with the Division of Medicaid to finalize the Scope of Services; PPS rate methodology; and rate setting.
- Facilitate MS CCBHC Learning Center and Office Hours.
- Execute a Project Evaluation.
- Develop and execute efforts included in a Workforce Development Plan
- Gather inventory of Training and Professional Development Activities and expand Relias licenses to support additional Training and Technical Assistance opportunities.
- Work with the Regions, the EHR vendors, and other state agencies to identify and recommend resources to support CCBHC data collection infrastructure needs.
- Create policies, procedures, playbooks, and templates that CMHCs and CCBHCs can leverage to obtain to meet the CCBHC certification criteria.
- DMH will update DMH Operational Standards with CCBHC certification criteria. **A cross-walk has been developed and shared with DMH leadership to update DMH Operating Standards. Provided on request.*
- Work with any willing CMHC/CCBHC to complete the CCBHC certification compliance checklist. After completing the review an opportunity analysis will be issued to the Region. DMH will use these analyses to identify training/TA/resource needs. **CCBHC Compliance Checklist is attached.*
- Prepare a CCBHC Provider Manual.
- Supply CCBHC promotional materials, including fact sheets, policy maker, and stakeholder communications and presentations.
- Execute significant stakeholder engagement efforts, including engaging state and local agencies to support CMHCs.
- Work with Region 6 and 14 to develop a Family/Client/Consumer Engagement Playbook.
- Develop MS proposal for the Demonstration Grant due in March 2024.
- *Handle all other MS CCBHC needs, as assigned....*



CCBHC Training and Technical Assistance

MS CCBHC Steering Committee

2nd Tuesday Monthly at 2:30 p.m. September 12; October 10; November 14; December 12; January 9; February 13; March 12; April 9; May 14; and June 11

MS CCBHC Learning Center

Every Tuesday and Thursday at 9 a.m. CST
Topics/Schedule posted on the website

MS CCBHC Office Hours

Every Monday from 11 a.m. to Noon CST
Drop-in sessions where CCBHC/DMH staff available to support MS

Resources and FAQs

Updated and posted weekly on the website after MS CCBHC Learning Center sessions and Office Hours



CMHC Engagement Opportunities

CMHCs that are currently CCBHCs

- Share the results of your Community Needs Assessment
- Provide any SAMHSA reporting or grant proposal narratives.
- Share any best practices.

CMHCs that are *NOT* currently CCBHCs

- Distribute a Community Needs Assessment survey in your region that can be used to help support the MS State Community Needs Assessment
- Work with CCBHC staff to complete the CCBHC compliance checklist.

All CMHCs

- Secure proclamations in support of MS's CCBHC efforts from county/city/legislators. DMH will provide draft language.
- Help DMH identify potential partnerships and Designated Collaborating Organizations (DCOs) in your region.
- Participate in the CCBHC Learning Collaborative discussions and Steering Committee workgroups.
- Support CMHC related activities in the Diversity Impact Statement.
- Post a link to DMH's CCBHC web page



Open Discussion:

- What topics do you want to learn more about?

Thank You!

