



Certified Community Behavioral Health Centers (CCBHC) Planning Grant



**MENTAL
HEALTH**



**INTELLECTUAL AND DEVELOPMENTAL
DISABILITY SERVICES**



**ALCOHOL AND DRUG
ADDICTION SERVICES**



The Mississippi Department of Mental Health provides **hope by supporting a continuum of care for people with mental illness, alcohol and drug addiction, and intellectual or development disabilities.**



**MENTAL
HEALTH**



**INTELLECTUAL AND DEVELOPMENTAL
DISABILITY SERVICES**



**ALCOHOL AND DRUG
ADDICTION SERVICES**



MENTAL HEALTH

By inspiring hope, helping people on the road to recovery, and improving resiliency, the public mental health system is working to help Mississippians succeed.



INTELLECTUAL AND DEVELOPMENTAL DISABILITY SERVICES

Mississippians deserve to receive individualized care and evidence-based services that are designed for their unique needs.



ALCOHOL AND DRUG ADDICTION SERVICES

Community education and awareness promotes understanding and acceptance of people with mental illness, alcohol and drug addiction, and intellectual or developmental disabilities.

The CCBHC Story

SAMHSA
Substance Abuse and Mental Health
Services Administration

NATIONAL COUNCIL
for Mental Wellbeing®

HEALTHY MINDS • STRONG COMMUNITIES



What is a CCBHC?

Ensuring access to coordinated comprehensive behavioral health care and serving those who request mental health or substance use care.

CCBHC Criteria Program Requirements

1. Staffing

- Staffing plan driven by local needs assessment.
- Licensing and training to support service delivery.

2. Availability and Accessibility of Services

- Standards for timely and meaningful access to services, outreach and engagement.
- 24/7 access to crisis services, treatment planning and acceptance of all patients regardless of ability to pay.

3. Care Coordination

- Care coordination agreements across services and providers.
- Defining accountable treatment team, health information technology and care transitions.

4. Scope of Services

- Nine required services, as well as person-centered, family-centered and recovery-oriented care.

5. Quality and Other Reporting

- 21 quality measures, a plan for quality improvement and tracking of other program requirements.

6. Organizational Authority, Governance and Accreditation

- Consumer representation in governance.
- Appropriate state accreditation.

Note: This presentation contains a summary of selected CCBHC certification criteria. To view the full criteria:

https://www.samhsa.gov/sites/default/files/programs_campaigns/ccbhc-criteria.pdf



CCBHC Required Services

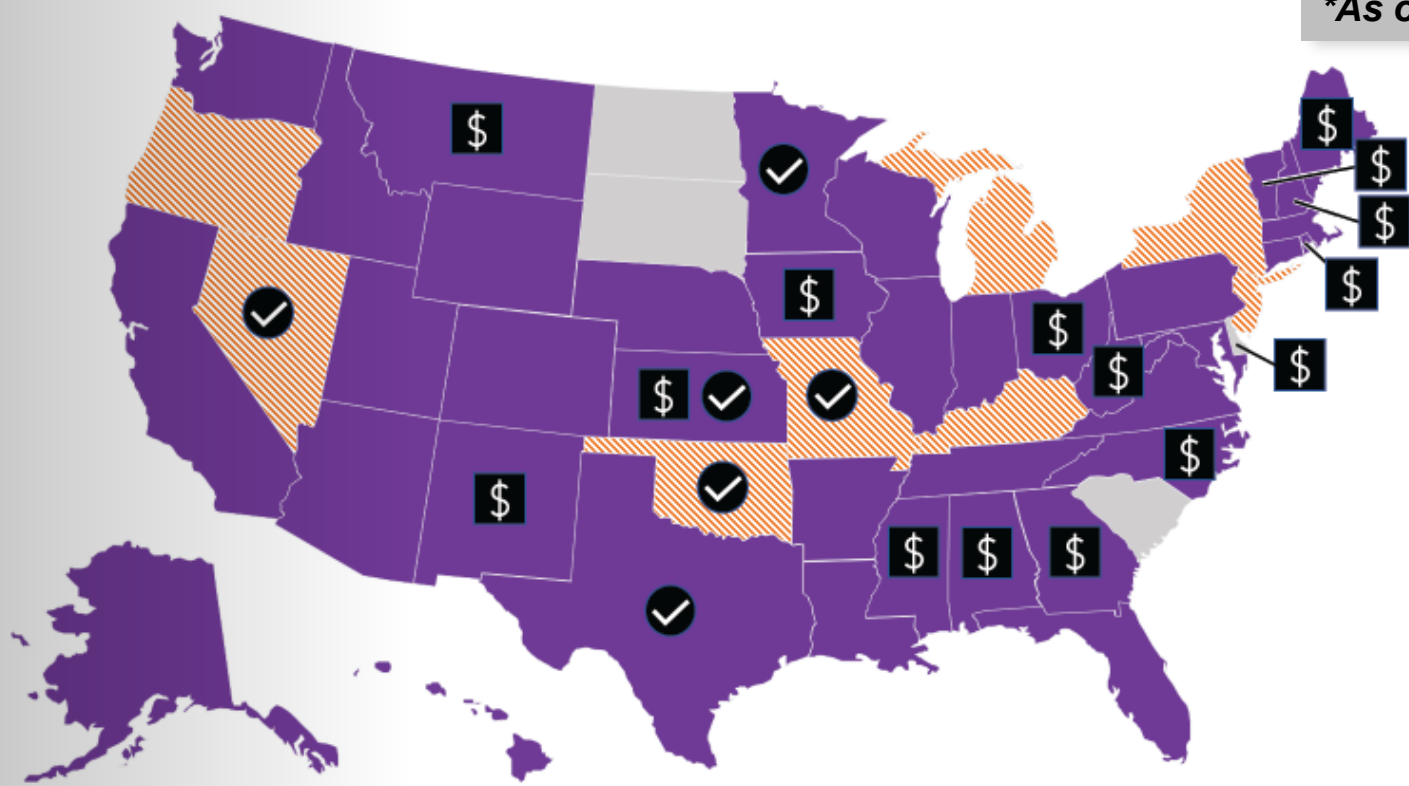



CCBHCs are responsible for providing all nine services, which can be provided directly or through formal relationships with Designated Collaborating Organization (DCOs):


- 1.Crisis Services
- 2.Treatment Planning
- 3.Screening, Assessment, Diagnosis & Risk Assessment
- 4.Outpatient Mental Health & Substance Use Services
- 5.Targeted Case Management
- 6.Outpatient Primary Care Screening and Monitoring
- 7.Community-Based Mental Health Care for Veterans
- 8.Peer, Family Support & Counselor Services
- 9.Psychiatric Rehabilitation Services


Map of CCBHCs Across the US


**As of March 6, 2023*



- 

Federal CCBHC Medicaid Demonstration (And SAMHSA Expansion Grants)
- 

State contains at least one local SAMHSA expansion grantee in the state
- 

CMS-approved payment method for CCBHCs via a SPA or 1 waiver separate from Demonstration
- 

Chosen to receive one-year planning grant needed to join Medicaid Demonstration starting in March 2023



CCBHC National Movement



2017

8

states

66

clinics

2019

21

states

113

clinics

2020

33

states

229

clinics

2021

40+

states

430+

clinics

The Bipartisan Safer Communities Act included provisions for expansion of the CCBHC Medicaid Demonstration Program.

Beginning July 1, 2024, and every two years thereafter, the legislation allows up to 10 additional states to join the demo.



Early Impact

Since inception of the model, CCBHCs report:

STAFFING: Increased recruitment and hiring of staff, greater staff satisfaction and retention, redesigning care teams.

ACCESS: Decreased wait times for care and elimination of wait lists, targeted outreach to vulnerable, underserved and complex populations, expanding services offered outside the four walls of the clinic.

COMMUNITY IMPACT: Improved partnerships with schools, primary care, law enforcement, hospitals.

HEALTH IMPACT: Reduced hospitalizations/ED visits, improvements in physical health indicators.



CCBHCs expand service delivery services outside the clinic. The top locations included clients' homes (78%), schools (97%), courts, police offices and other justice-related facilities (86%), and emergency departments (20%).



CCBHC's Value for Mississippi



- **Improve access to and delivery** of community-based behavioral health services.
- **Address gaps or barriers to care** in Mississippi
- Establish **sustainable funding** for additional investment in **quality, evidence-based mental health and substance use services**.
- Offer **more competitive wages** because of the cost-based reimbursement that can aid in alleviating workforce shortages.
- Hold CMHCs accountable for **quality outcomes**.
- **Engage stakeholders and consumers of mental health services**, including youth, family members, and community leaders, to provide input on a **customizable approach to care** that increases responsiveness to the needs of Mississippians.



CCBHC Planning Grant

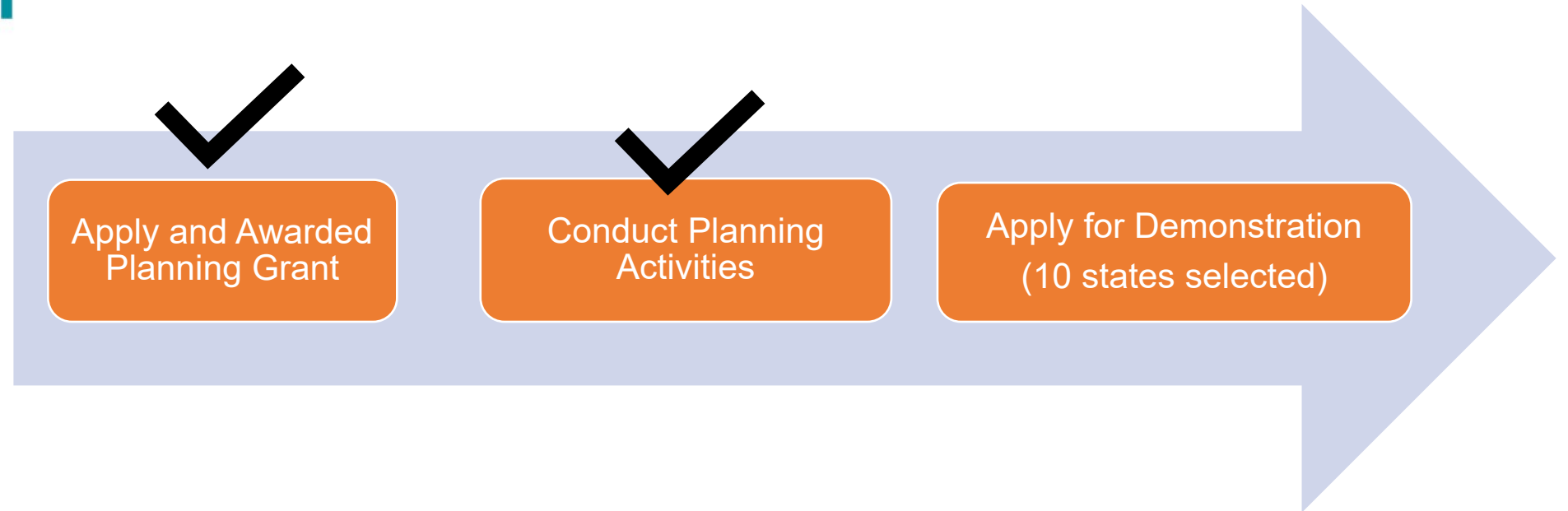


Purpose

Transform community behavioral health systems and provide comprehensive, coordinated behavioral health care by:

- (a) **Assisting organizations in the planning for and development and implementation of a new CCBHC** that meets the CCBHC Certification Criteria
- (b) Providing a comprehensive range of **outreach, screening, assessment, treatment, care coordination, and recovery supports** based on a needs assessment that aligns with the CCBHC Certification Criteria, and
- (c) Supporting recovery from mental illness and/or substance use disorders (SUD) by **providing access to high-quality mental health and SUD services, regardless of an individual's ability to pay**

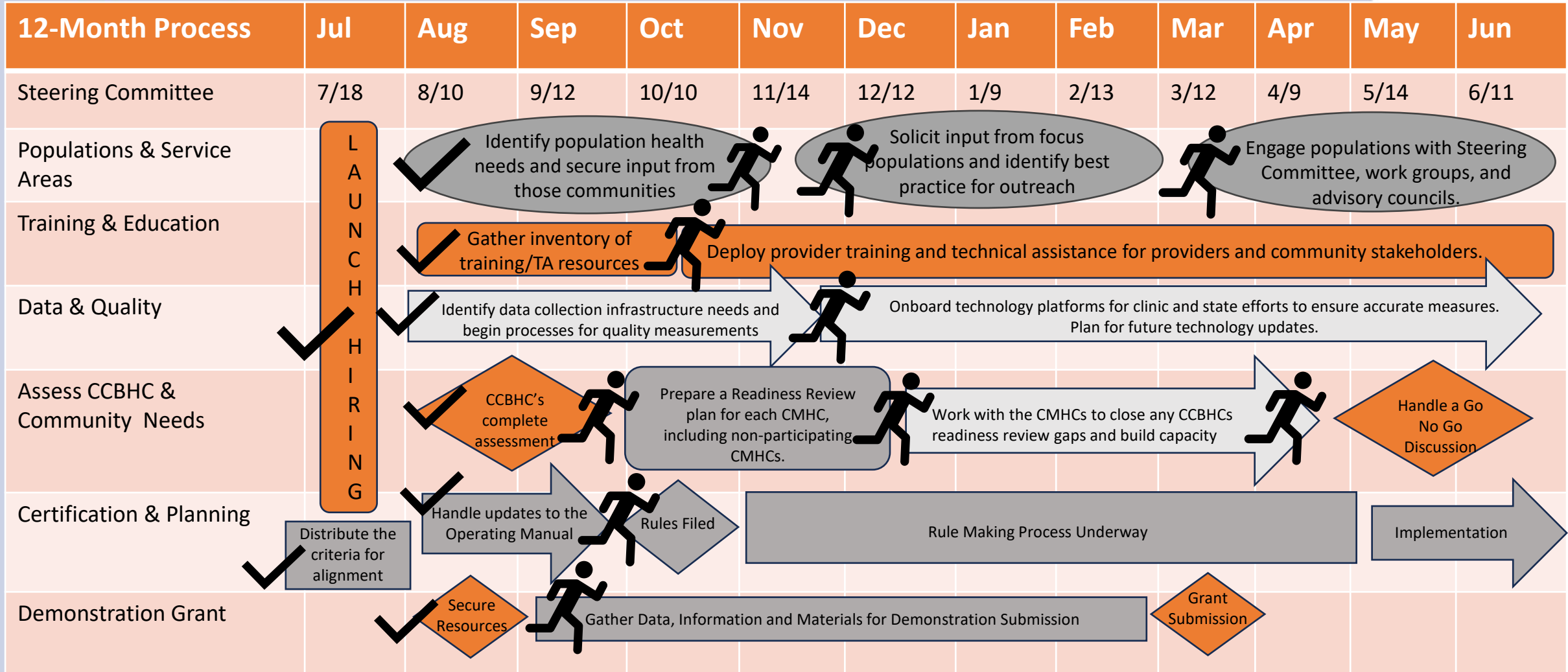
CCBHC Demonstration Participation



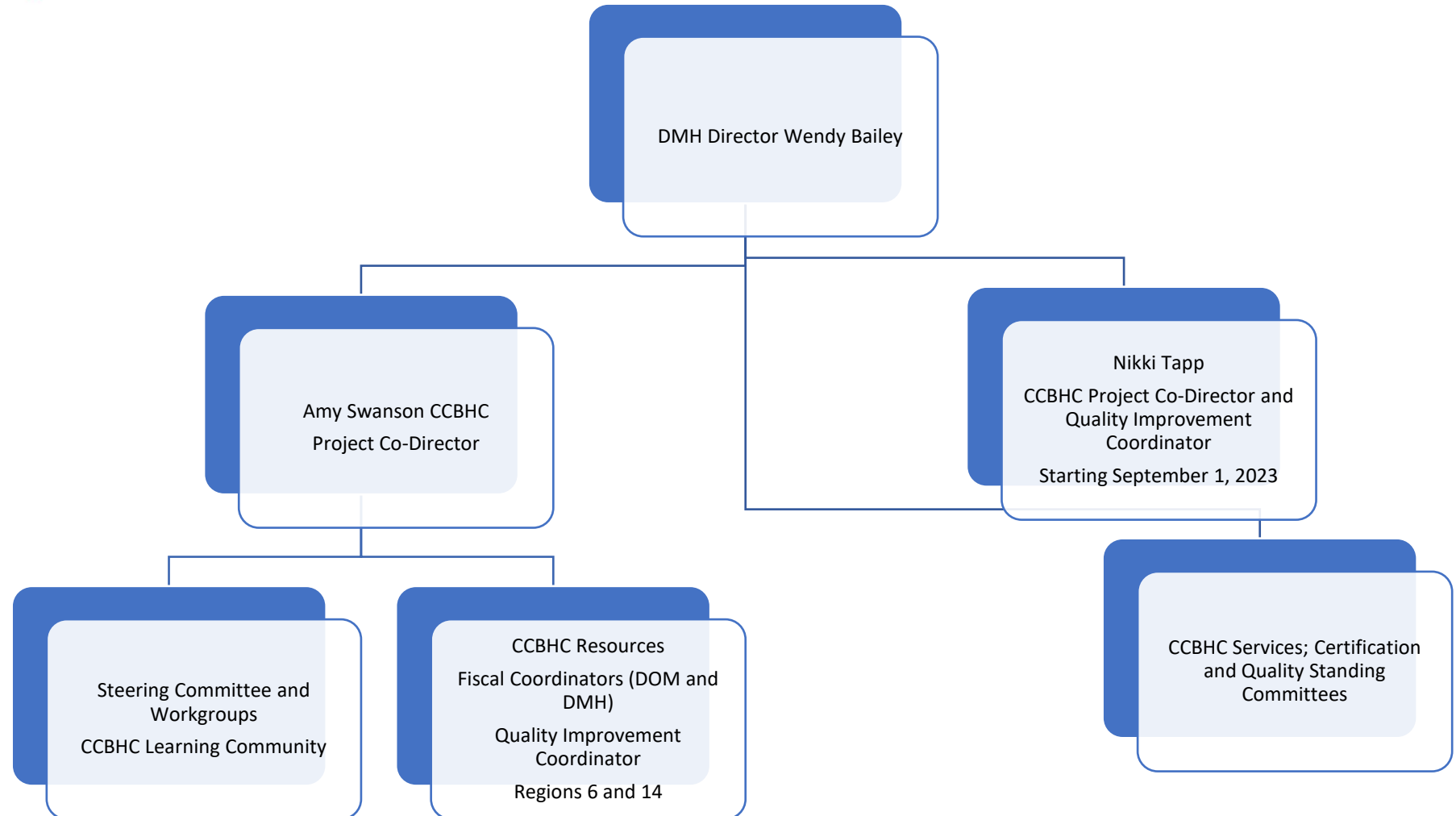
- **Eligibility to Apply for the Demonstration**
 - If a state has received a planning grant in 2016 or 2023, they can apply to join the demonstration on 3/20/24



Mississippi Planning Grant Activities and Timeline



MS CCBHC Planning Grant Oversight





MS CCBHC Steering Committee

CCBHC Steering Committee Meetings: 2nd Tuesday, Monthly at 2:30 p.m. CST



Executive Committee

Governance: Meeting every Tuesday from 8-8:45 a.m.

Finance: Meeting every Wednesday from 9:00-9:45 a.m.

Infrastructure

Staffing and Workforce Development; Training; Family & Client Engagement; Care Coordination; and Culture Competency.

CCBHC Certification

DMH Operational Standards Committee Schedule

Quality

Data and Reporting; Evaluation; and Quality Assurance Plan

Services and Supports

IDD; SUD; Children and Youth

CCBHC Learning Collaborative: We will have an agenda item during the Mississippi CMHC Association meeting on the 2nd Wednesday, monthly from 10-Noon CST.

Stakeholder Engagement, Outreach and Communications

Join Our Team

Sign Up to Help Transform Mississippi's Mental Health System!

CCBHC State Planning Grant Steering Committee

Standing and Workgroup Committee Descriptions and Sign-Up Form

For questions or to return form please contact:
amy.swanson@dmh.ms.gov



MS CCBHC Steering Committee



Committees/Workgroups	Description	Name of Contact (place the name/contact information for support you will provide)
Steering Committee	The Steering Committee will meet monthly to inform planning efforts. The Steering Committee will include representation from DMH and other state and local officials with understanding and commitment to the CCBHC. DMH representation will include those with decision-making authority. Importantly, the Steering Committee will also include four Project Coordinators who will represent both existing and pilot CCBHCs. <i>Meeting dates/timeframes: 2nd Tuesday from 2:30 to 3:15 p.m. CST</i>	
CCBHC Learning Collaborative	We will convene a Learning Collaborative workgroup among representatives from the state's CCBHC grantees and non-CCBHC CMHCs to inform the process and engage all Mississippi CMHCs in the CCBHC transformation process. <i>Meeting dates/timeframes: TBD</i>	
Executive Standing Committee <ul style="list-style-type: none"> Governance Workgroup Finance Workgroup 	Establish CCBHC leadership, goals, and project management processes to ensure a shared vision and strategic partners are included in planning. Handle any finance or staffing decisions related to the Planning Grant. Coordinate efforts to apply for Demonstration. The Finance Workgroup will establish CCBHC prospective payment methodology that covers the anticipated costs of delivery of mental health and substance use services and identify a mechanism for quality bonus payments for high-performing clinics. <i>Meeting dates/timeframes: TBD</i>	

CCBHC Training and Technical Assistance

- **MS CCBHC Learning Center**
 - Every Tuesday and Thursday at 9 a.m. CST
 - Topics/Schedule posted on the website
- **MS CCBHC Office Hours**
 - Every Monday from 11 a.m. to Noon CST
 - Drop-in sessions where CCBHC/DMH staff available to support MS
- **Resources and FAQs**
 - Updated and posted weekly on the website after MS CCBHC Learning Center sessions and Office Hours

Thank You!

