



# Certified Community Behavioral Health Centers (CCBHC) Planning Grant Steering Committee Meeting July 18<sup>th</sup> at 2:30 p.m.



**MENTAL  
HEALTH**



**INTELLECTUAL AND DEVELOPMENTAL  
DISABILITY SERVICES**



**ALCOHOL AND DRUG  
ADDICTION SERVICES**



# CCBHC Steering Committee Meeting

## Agenda

Introductions

The CCBHC Story

CCBHC Value for Mississippi

Overview of the CCBHC Planning Grant

PROPOSED Governance Structure

Group Activity: Building Our Team

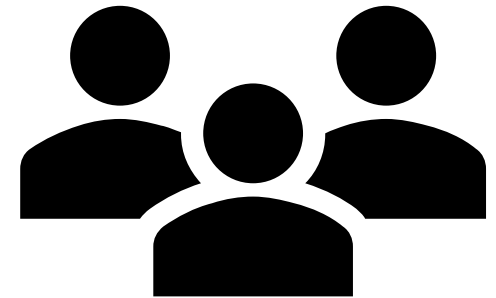
- *Proposed Meeting Dates:* **2<sup>nd</sup> Tuesday Monthly at 2:30 p.m.** (August 10; September 12; October 10; November 14; December 12; January 9; February 13; March 12; April 9; May 14; and June 11)



# Introductions



Share your *name*, the *organization* you work with and *a food you ate on July 4<sup>th</sup>*.





The Mississippi Department of Mental Health provides **hope** by supporting a continuum of care for people with mental illness, alcohol and drug addiction, and intellectual or development disabilities.



**MENTAL  
HEALTH**



**INTELLECTUAL AND DEVELOPMENTAL  
DISABILITY SERVICES**



**ALCOHOL AND DRUG  
ADDICTION SERVICES**



---

## MENTAL HEALTH

By inspiring hope, helping people on the road to recovery, and improving resiliency, the public mental health system is working to help Mississippians succeed.



---

## INTELLECTUAL AND DEVELOPMENTAL DISABILITY SERVICES

Mississippians deserve to receive individualized care and evidence-based services that are designed for their unique needs.



---

## ALCOHOL AND DRUG ADDICTION SERVICES

Community education and awareness promotes understanding and acceptance of people with mental illness, alcohol and drug addiction, and intellectual or developmental disabilities.



# The CCBHC Story



## What is a CCBHC?

Ensuring access to coordinated comprehensive behavioral health care and serving those who request mental health or substance use care.

NATIONAL COUNCIL  
for Mental Wellbeing®

HEALTHY MINDS • STRONG COMMUNITIES



# CCBHC Required Services



**CCBHCs are responsible for providing all nine services, which can be provided directly or through formal relationships with Designated Collaborating Organization (DCOs):**

- 1.Crisis Services
- 2.Treatment Planning
- 3.Screening, Assessment, Diagnosis & Risk Assessment
- 4.Outpatient Mental Health & Substance Use Services
- 5.Targeted Case Management
- 6.Outpatient Primary Care Screening and Monitoring
- 7.Community-Based Mental Health Care for Veterans
- 8.Peer, Family Support & Counselor Services
- 9.Psychiatric Rehabilitation Services



# CCBHC's Value for Mississippi

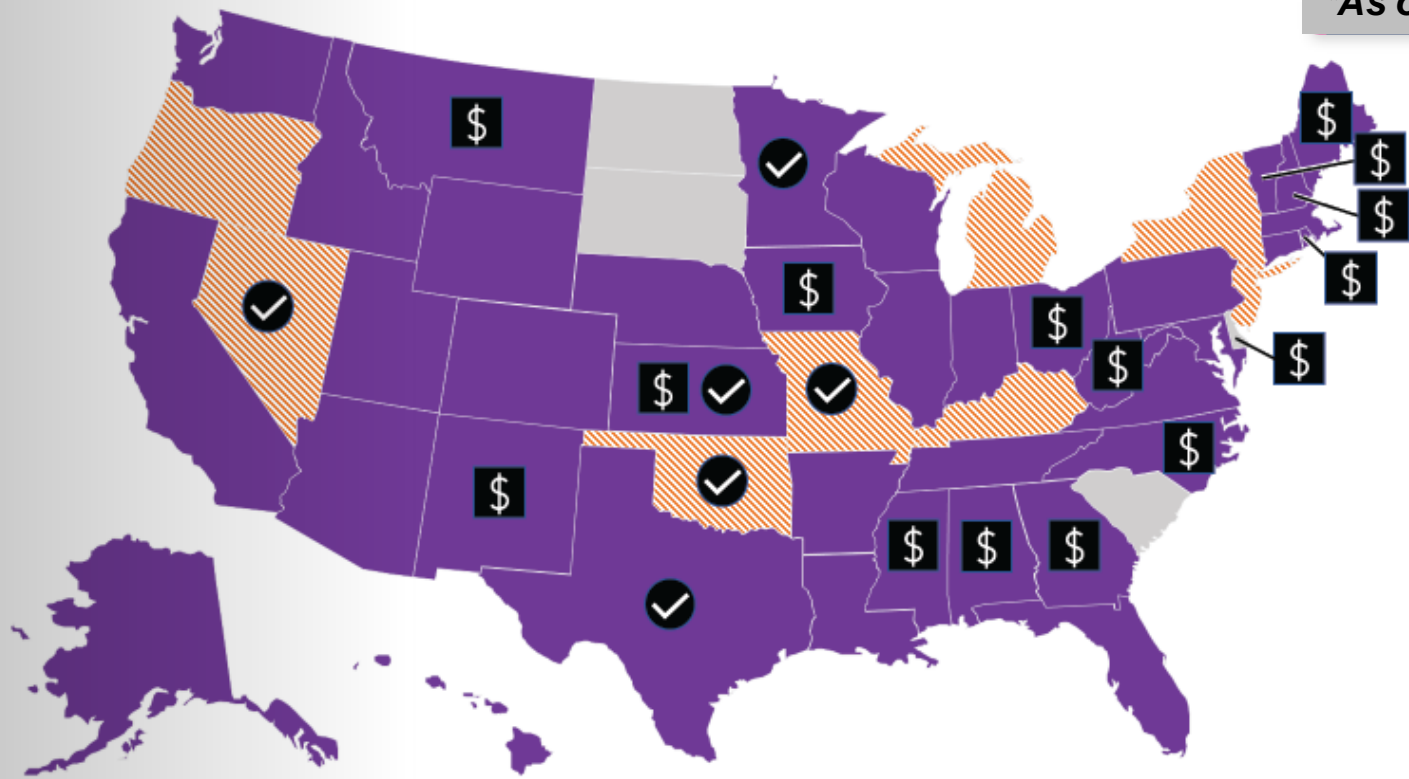



- **Improve access to and delivery** of community-based behavioral health services.
- **Address gaps or barriers to care** in Mississippi
- Establish **sustainable funding** for additional investment in **quality, evidence-based mental health and substance use services.**
- Offer **more competitive wages** because of the cost-based reimbursement that can aid in alleviating workforce shortages.
- Hold CMHCs accountable for **quality outcomes.**
- **Engage stakeholders and consumers of mental health services**, including youth, family members, and community leaders, to provide input on a **customizable approach to care** that increases responsiveness to the needs of Mississippians.





# Map of CCBHCs Across the US


*\*As of March 6, 2023*



 Federal CCBHC Medicaid Demonstration (And SAMHSA Expansion Grants)

 State contains at least one local SAMHSA expansion grantee in the state

 CMS-approved payment method for CCBHCs via a SPA or 1 waiver separate from Demonstration

 Chosen to receive one-year planning grant needed to join Medicaid Demonstration starting in March 2023



# CCBHC Planning Grant



## Purpose

Transform community behavioral health systems and provide comprehensive, coordinated behavioral health care by:

- (a) **Assisting organizations in the planning for and development and implementation of a new CCBHC** that meets the CCBHC Certification Criteria
- (b) Providing a comprehensive range of **outreach, screening, assessment, treatment, care coordination, and recovery supports** based on a needs assessment that aligns with the CCBHC Certification Criteria, and
- (c) Supporting recovery from mental illness and/or substance use disorders (SUD) by **providing access to high-quality mental health and SUD services, regardless of an individual's ability to pay**

# CCBHC Demonstration Participation

Apply and Awarded  
Planning Grant

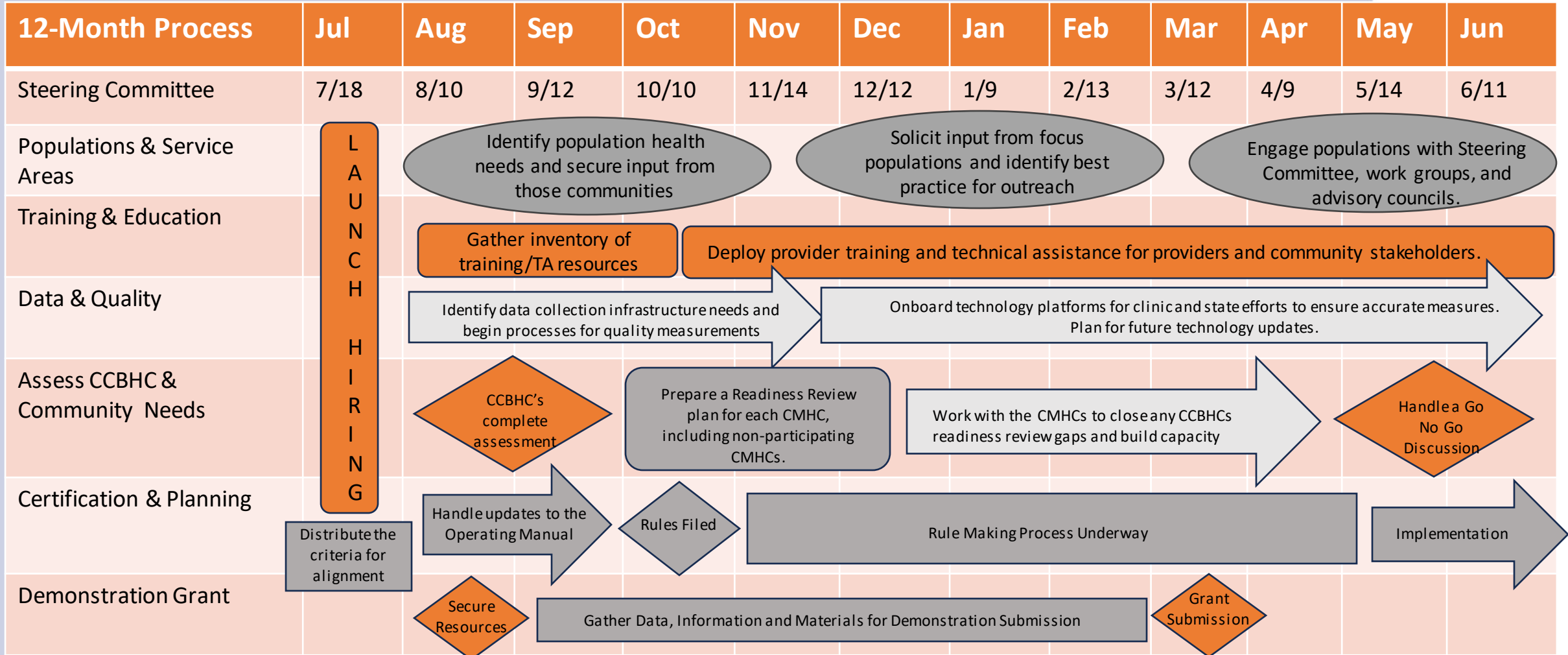
Conduct Planning  
Activities

Apply for Demonstration  
(10 states selected)

- **Eligibility to Apply for the Demonstration**
  - If a state has received a planning grant in 2016 or 2023, they can apply to join the demonstration on 3/20/24

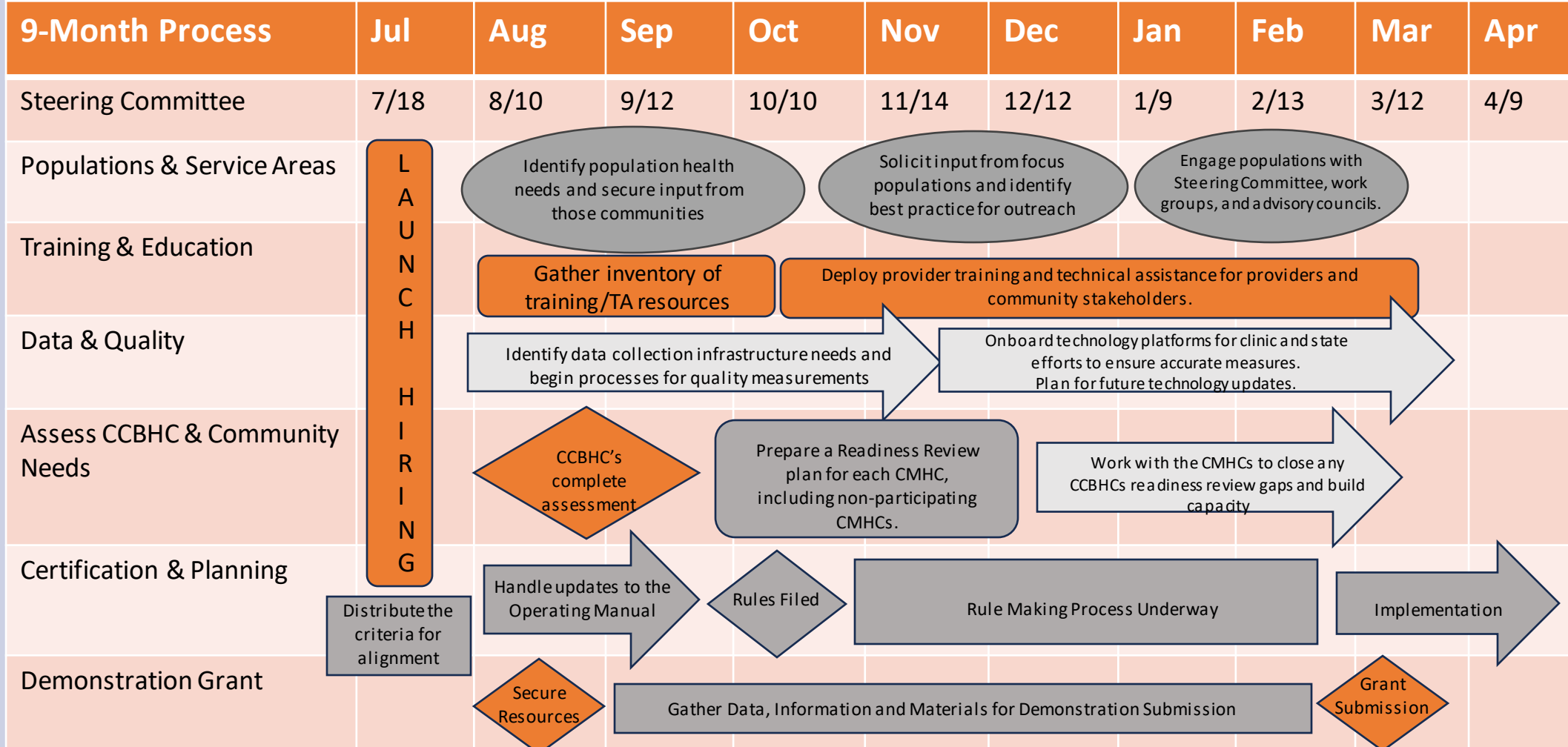


# Mississippi Planning Grant Activities and Timeline





# Mississippi Planning Grant Activities and Timeline





# Steps for CCBHC Implementation



## Needs Assessment

- Complete the Needs Assessment
  - Define the goals for the assessment
  - Articulate the purpose of the assessment
  - Identify the target populations for the assessment of needs and services
  - Determine how data will be collected and used
  - Determine the timeline for the process
  - Determine the strategic use of the findings
- Aggregate clinic Community Needs Assessments
- Conduct clinic-level readiness assessments.



# Steps for CCBHC Implementation



## Certification

- Determine Scope of Services
  - Identify currently state-funded programs that could be included in CCBHC
  - Determine if any new Medicaid billing codes need to be developed
  - Finalize the list of required and allowable services
  - Finalize the list of required and allowable (non-billable) activities
- Establish timing, content and flow for assessment and treatment planning
- Define Evidence Based Practices (required and allowable)
- Determine state discretionary items
- Update Mississippi Operating Standards with CCBHC certification requirements
- Identify process for applying



# Steps for CCBHC Implementation



## Evaluation

- Determine resources needed to collect, analyze and report on CCBHC outcome measures
- Collaborate with prospective CCBHCs on how to develop EHR capabilities to collect and report data
- Establish data submission and processing systems for CCBHCs
- Determine state specific or state impact measures
- Determine which quality measures will be utilized for the Quality Bonus Program and establish benchmarks
- Identify how clinic data can be aggregated for dashboards and other reporting stakeholders





# Steps for CCBHC Implementation



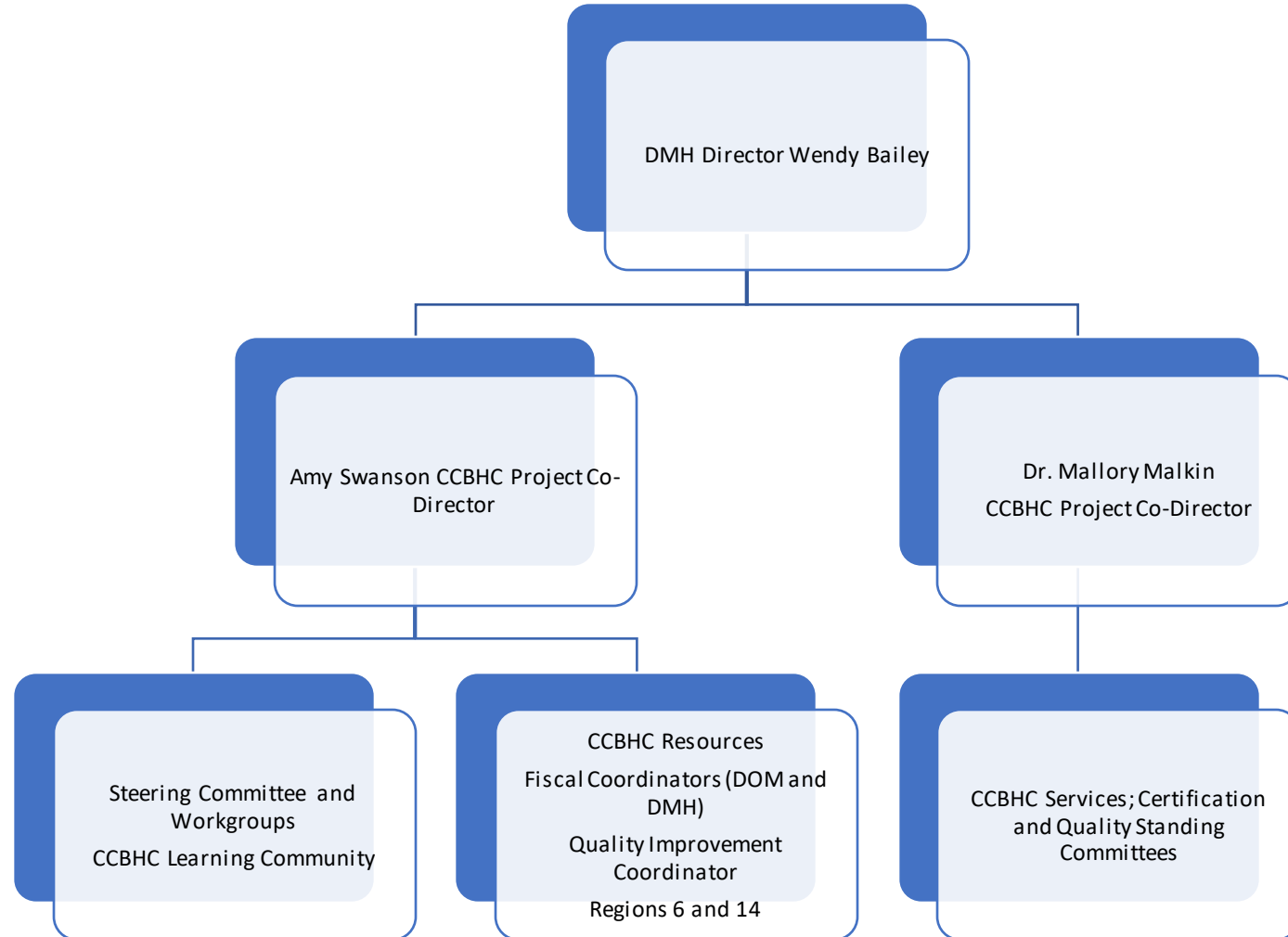
## Payment

- Mississippi will use PPS-1 payment methodology
- Determine billing processes
- Establish process for cost reporting
  - Training and TA for clinics
  - Auditing of cost reports
  - Selecting a possible vendor to assist with TA and Auditing of cost reports
- Identify resources needed to reprogram state billing systems for PPS
- Coordinate with Managed Care for payment
- Determine process for updating (MEI) and rebasing of rates.

Table 1. Rate Elements of CC PPS-1 and CC PPS-2

Rate Element	CC PPS-1	CC PPS-2
Base rate	Daily rate	Monthly rate
Payments for services provided to clinic users with certain conditions <sup>12</sup>	NA	Separate monthly PPS rate to reimburse CCBHCs for the higher costs associated with providing all services necessary to meet the needs of special populations
Update factor for demonstration year 2	Medicare Economic Index (MEI) <sup>13</sup> or rebasing	MEI or rebasing
Outlier payments	NA	Reimbursement for portion of participant costs in excess of threshold
Quality bonus payment	Optional bonus payment for CCBHCs that meet quality measures detailed on page 7	Bonus payment for CCBHCs that meet quality measures detailed on page 7

# MS CCBHC Planning Grant Oversight





# MS CCBHC Steering Committee



## Executive Committee

Governance and Finance

### Infrastructure

Staffing and Workforce Development; Training; Family & Client Engagement; Care Coordination; and Culture Competency.

### CCBHC Certification

### Quality

Data and Reporting; Evaluation; and Quality Assurance Plan

### Services and Supports

IDD; SUD; Children and Youth

## CCHBC Learning Collaborative

Stakeholder Engagement, Outreach and Communications



# Building Our Team

## Discussion Questions and Feedback

- Have we identified the right Standing Committees and Workgroups for the CCBHC Steering Committees?
- Are there groups that we need to engage to be successful?
- Can you help us identify and engage stakeholders?
- How do you want to engage?

# Thank You!

