



Certified Community Behavioral Health Centers (CCBHC) Planning Grant Steering Committee Meeting February 13th at 2:30 p.m.



**MENTAL
HEALTH**



**INTELLECTUAL AND DEVELOPMENTAL
DISABILITY SERVICES**



**ALCOHOL AND DRUG
ADDICTION SERVICES**

CCBHC Steering Committee Meeting

Agenda

- Welcome and CCBHC Activity Highlights
- Updates and Open Discussion
 - February In-Person Meeting
 - Demonstration Application Update
 - Training Plan
 - Family and Consumer Engagement Resources
 - PPS-1 Rate UPDATE
 - Workforce Development Committee

Upcoming Meeting Dates: 2nd Tuesday Monthly at 2:30 p.m.

March 12; April 9; May 14; and June 11



The Mississippi Department of Mental Health provides **hope by supporting a continuum of care for people with mental illness, alcohol and drug addiction, and intellectual or development disabilities.**



**MENTAL
HEALTH**



**INTELLECTUAL AND DEVELOPMENTAL
DISABILITY SERVICES**



**ALCOHOL AND DRUG
ADDICTION SERVICES**



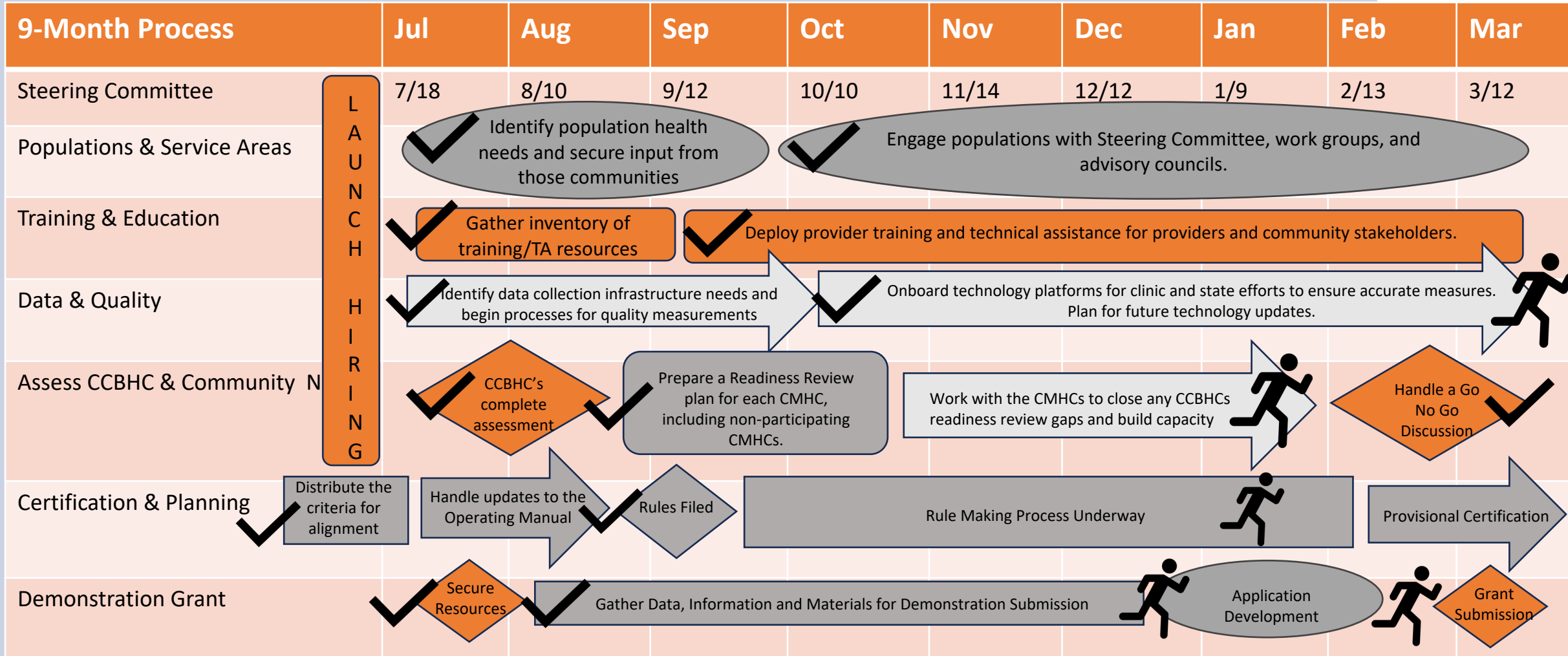
CCBHC's Value for Mississippi



- **Improve access to and delivery of community-based behavioral health services.**
- **Address gaps or barriers to care in Mississippi**
- **Establish sustainable funding for additional investment in quality, evidence-based mental health and substance use services.**
- **Offer more competitive wages** because of the cost-based reimbursement that can aid in alleviating workforce shortages.
- **Be accountable for quality outcomes.**
- **Engage stakeholders and consumers of mental health services**, including youth, family members, and community leaders, to provide input on a **customizable approach to care** that increases responsiveness to the needs of Mississippians.



Mississippi Planning Grant Activities and Timeline



L
A
U
N
C
H

H
I
R
I
N
G

Remaining Work in 2024

- Submit the Demonstration Application
- Certify Regions 6 and 14 under the Mississippi CCBHC criteria
- Finalize cost reporting and rate setting
- Configure claims systems
- Workforce Development
- IT Roadmap for Data and Reporting
- Legislative Outreach
- CCBHC Requirements Training and Capacity Building
- Finalize Quality Improvement Projects
- Communications Planning and Outreach

Discussion Question:

- **What additional areas of work do you think we should be doing?**



February 23rd Meeting



CCBHC Planning Grant Stakeholder Engagement Planning Meeting

February 23rd 9:30 a.m. to 3:00 p.m.

Registration opens at 9:00 a.m.

Location: Hinds Behavioral Health Center, 3450 US-80, Jackson, MS 39209

Attendees

- SAMHSA, MTM Services
- DMH and DOM staff
- CMHC Staff
- Representatives from the following organizations: 988 Crisis Call Centers; Child welfare agencies; CHOICE housing voucher program; Employment Services systems; Juvenile and criminal justice agencies and facilities (including drug, mental health, veterans, and other specialty courts); Indian Health Service or other tribal programs; Mississippi Department of Rehabilitation Services; Peer Support programs; Other social and human services; Recovery Housing Services; Schools; State licensed and nationally accredited child placing agencies for therapeutic foster care service; and Transportation.

Goals

- Convene representatives, and people with lived experiences, from the external stakeholders required for CCBHC certification.
- Share updates and potential impacts for Mississippi of the CCBHC efforts.
- Gather feedback from representatives, and people with lived experiences, from the minimum mandatory partnerships required for CCBHC certification.
- Facilitate networking with community stakeholders.
- Develop population specific outreach and engagement strategies



February 23rd Detailed Agenda



9:30 a.m. Welcome from DMH Director Wendy Bailey

GUEST SPEAKER: LEAH COMPTON, SAMHSA

- CCBHC National Learnings and Goals, including Successful Outreach and Engagement Efforts Across the Country (potential)

10:15 a.m. Update on Mississippi's CCBHC Planning Grant Efforts

- CCBHC Planning Grant Goals and Status Update
- Status Update

10:30 a.m. Facilitated Panel Discussion: Engaging and outreaching people who need mental health and substance abuse services.

- 988 Crisis Call Centers
- Child welfare agencies
- CHOICE housing voucher program
- Employment Services systems
- Juvenile and criminal justice agencies and facilities (including drug, mental health, veterans, and other specialty courts)
- Mississippi Department of Rehabilitation Services
- Peer Support programs
- Other social and human services
- Early Childhood
- Schools (Are there regionally specific items)
- State licensed and nationally accredited child placing agencies for therapeutic foster care service.
- Transportation

The Panel Facilitator will ask each of the panelists to share: Details on their agency/organizations efforts to outreach/engage people who need mental health and substance abuse services, including information on how people get involved with these efforts. What kinds of results they are getting? Are there challenges that they are facing? How could CCBHCs help support their work? What do they think will be important for Mississippi to consider as we implement the CCBHC model?



February 23rd Detailed Agenda



Noon-12:45 p.m.

Networking Lunch

12:45 p.m.

Workgroup Activity: Developing Outreach and Engagement Plans

- Everyone will be assigned to participate in an outreach and engagement plan discussion for the following areas:
 - 988 Crisis Call Centers
 - Peer Support programs; Indian Health Service or other tribal programs
 - Child welfare agencies; State licensed and nationally accredited child placing agencies for therapeutic foster care service.
 - CHOICE housing voucher program; Employment Services systems; Transportation
 - Mississippi Department of Rehabilitation Services; Juvenile and criminal justice agencies and facilities (including drug, mental health, veterans, and other specialty courts);
 - Other social and human services
 - Schools
- Each workgroup will be assigned a facilitator and notetaker. Each group will start with a quick introduction activity, where they share their name and one thing, they want to see accomplished from the CCBHC model. Each workgroup will define:
 - Target Audience(s) for their Outreach and Engagement Efforts
 - Example: Transportation providers
 - Identify
 - ONE SMART Goal for Outreach and Engagement Efforts
 - Examples: This could include scheduling a follow-up meeting, making a connection between two organizations/people; or participating in another organization's upcoming event or activity.
 - ONE ACTIVITY to Achieve their SMART Goal
 - Examples of potential activities: Sharing contact information with each team; or holding lunch-n-learns/meet-n-greets between organizations on their individual programs and services.

• 2:00 p.m.

Workgroups Report Out Activities

• 2:45 p.m.

Meeting Debrief, Next Steps and Evaluation

• 3:00 p.m.

Meeting Ends



Demonstration Application Work Plan and Process



**MENTAL
HEALTH**



**INTELLECTUAL AND DEVELOPMENTAL
DISABILITY SERVICES**



**ALCOHOL AND DRUG
ADDICTION SERVICES**

February									
Sunday	Monday	Tuesday	Wednesday	Thursday	Friday	Saturday			
				1	2	3			Development and Writing: This is the work needed to develop and write content for the application.
4	5	6	7	8	9	10			Writing and Revising: This is the work needed to be completed after yellow, white, mock review, and red team review.
11	12	13	14	15	16	17			Yellow Team Review: This is the initial review from individuals on the rough draft. Yellow Team reviewers should focus on general content, alignment to the strategy goals, and compliance to the federal application requirements.
18	19	20	21	22	23	24			Orange Team Review: This is the review completed before the mock reviews. Orange Team reviewers should focus on general content, alignment to the strategy goals, compliance to the federal application requirements, and highlighting any missing gaps/opportunities.
25	26	27	28	29					Red Team Review: This is the final review completed before the Green Team final review. Red Team reviewers should have a critical eye on the federal application requirements and closure of any gaps/opportunities.
									Green Team Review: This is the final review before final application preparation. There will be no additional reviews after the Green Team Review and Approval.
									Mock Review: This is a mock review that includes scoring based on the application scale.

March						
Sunday	Monday	Tuesday	Wednesday	Thursday	Friday	Saturday
					1	2
3	4	5	6	7	8	9
10	11	12	13	14	15	16
17	18	19	20	21	22	23
24	25	26	27	28	29	30
31						

Development and Writing: This is the work needed to develop and write content for the application.

Writing and Revising: This is the work needed to be completed after yellow, white, mock review, and red team review.

Orange Team Review: This is the review completed before the mock reviews. Orange Team reviewers should focus on general content, alignment to the strategy goals, compliance to the federal application requirements, and highlighting any missing gaps/opportunities.

Red Team Review: This is the final review completed before the Green Team final review. Red Team reviewers should have a critical eye on the federal application requirements and closure of any gaps/opportunities.

Green Team Review: This is the final review before final application preparation. There will be no additional reviews after the Green Team Review and Approval.

Grammar/Style/Graphics Editing

Final Submission to SAMHSA



Training Plan



**MENTAL
HEALTH**



**INTELLECTUAL AND DEVELOPMENTAL
DISABILITY SERVICES**



**ALCOHOL AND DRUG
ADDICTION SERVICES**



CCBHC DRAFT Training Plan



- **Serves as a guide for training plan development**
- **Includes a list of Trainings – Required, EBP's, and Peer Engagement**
- **Identifies potential sources for access to training**
- **Denotes the relevant criteria code**
- **Provides guidance on timing and intervals for training**
- **Can serve as a training log**
- **Available for the Division of Certification to use at onsite visits**



Family and Consumer Resources



**MENTAL
HEALTH**



**INTELLECTUAL AND DEVELOPMENTAL
DISABILITY SERVICES**



**ALCOHOL AND DRUG
ADDICTION SERVICES**



CCBHC Family and Consumer Resources



- **AMPSS – Association of Mississippi Peer Support Specialists**
- **CHOICE- Voucher Program (MUTEH- Mississippi United to End Homelessness)**
- **Families As Allies**
- **Harm Reduction Initiative**
- **(MHA) Mental Health Association of South MS**
- **Mississippi Recovery Advocacy Project**
- **MS Coalition for Citizens with Disabilities (includes people with SMI and families of children with SED)**
- **Open Up Mississippi**
- **NA/AA**
- **NAMI/NAMI MS (National Alliance of Mental Illness)**
- **Veteransville - (peer run veterans' program on the coast)**

We welcome additional Resources — nikki.tapp@dmh.ms.gov

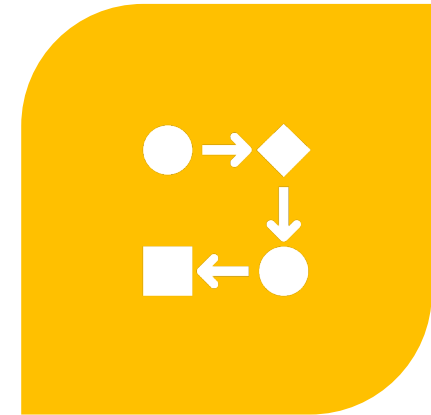
Cost Report & PPS-1



INITIAL COST REPORT COMPLETE
FOR REGION 6 AND REGION 14



CURRENTLY UNDER DMH AND DOM
REVIEW



NEXT STEP: REVISED BASED ON
DMH AND DOM
RECOMMENDATIONS.

Cost Reporting & PPS-1

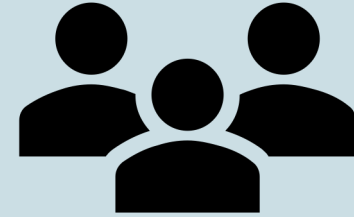
UPDATE

Process	Status	Description
Step 1	Complete	Region 6 and Region 14 submit cost reports for initial review (Scott Banken & Mark Scott).
Step 2	Ongoing	Cost reports review by DMH and DOM.
Step 3		Adjustment/Revisions based on DHM and DOM review findings.
Step 4		Audit by Myers & Stauffer.
Step 5		Adjustment/Revisions based on Myers & Stauffer review findings.
Step 6		PPS-1 Rate approved.

Workforce Development Committee

Initial Meeting 1/22/2024

Next Meeting 2/19/2024



Membership

- Department of Mental Health
- Division of Medicaid
- Office of Mental Health Accessibility
- Region 3
- Region 6
- Region 7
- Region 14

Assistance and SME's

- AccelerateMS
- Mississippi Manufactures Association (Subject Matter Expert advisor)
- Mississippi Department of Employment Security

Thank You!

